



LEADERS IN FLUID TRANSFER SOLUTIONS

# Instruction Manual

## PISTOL GRIP GREASE GUN (450G)

S-GGP450-01



## PISTOL GRIP GREASE GUN



S-GGP450-01

## SAFETY

- STM recommends using of PPE equipment, such as safety glasses, protective gloves, safety shoes, etc, before handling or using this product.
- Improper use of this product could cause RSI injury (especially to the hand or arm).
- Do not modify or alter this product in any way.
- Only physically fit people should be authorised to use this product.
- Ensure any fluid spillage is cleaned up immediately to prevent slipping or injury.
- Keep hands clear of any potential pinch points.
- Do not hold the steel extension or coupler when greasing.

## PACKAGE CONTENTS

Pistol grip grease gun, flexible hose, rigid spout and a standard coupler.

## TECHNICAL DETAILS

- Working Pressure: 4500 PSI.
- Maximum pressure up to 6000 PSI.
- Supplied with standard 4 jaw grease coupler, flexible hose and rigid extension.
- 9 mm Bulk filler helps refill the grease gun from grease pumps.
- Air Bleeder to purge any trapped air.
- Deliver 0.7 g per stroke.

## SPECIFICATIONS

- Rugged Die Cast Aluminium Head.
- The barrel can be bulk-filled or used with 450 grams grease cartridge.
- Use with grease viscosity up to NLGI 2.
- Pack Weight: 2kg or 4.4lb.

## DIMENSIONS

Dimension: 400mm X 150mm X 70mm or 15.7in X 5.9in X 2.7in.

## INTRODUCTION:

Thank you for purchasing the STM S-GGP450-01 Pistol Grip Grease Gun.

## PLEASE READ THIS SAFETY INFORMATION CAREFULLY BEFORE USE.

Read and retain this instruction manual to assist you in operating this product.

'Cautions' are listed throughout this manual to advise of actions that may cause damage to your equipment.

## PRODUCT DESCRIPTION:

- This is a High-Quality Pistol grip type grease gun engineered for durability and high-pressure greasing.
- A wide range of complementary STM greasing accessories, such as Flexible Extensions, Needle Point Couplers, Adaptors, and Button Head Couplers are available from your STM dealer.

**CAUTION:** *Never allow any part of the human body to come in front of or direct contact with a material outlet. Never point the nozzle of the gun at yourself or anyone else. Caution must be observed when either unscrewing the barrel or unscrewing the pull handle from the follower rod as the large follower spring inside the barrel is energised.*

## ASSEMBLY:

- Securely tighten the steel extension rigid spout/flexible hose and coupler assembly to the grease gun head outlet.
- Refer to the grease filling procedure for proper grease filling.

**NOTE:** *Grease gun must be primed before operating.*

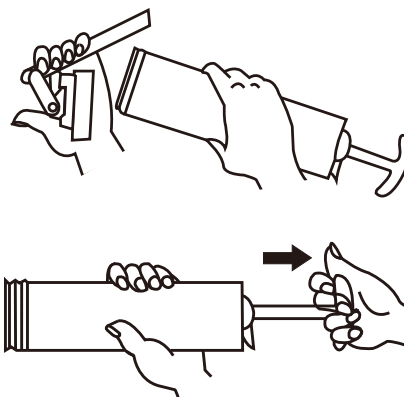
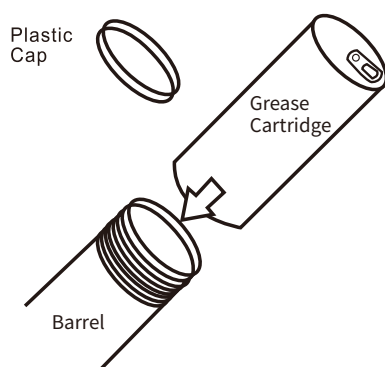
## GREASE FILLING PROCEDURE:

There are three ways of filling grease, which are listed below.

### a. Cartridge Fill:

- Unscrew the grease gun head and lock the follower rod by pulling it out.
- Remove the caps from both ends of the grease cartridge and insert the open end of the cartridge into the barrel facing the gun body.
- Screw the grease gun head on the barrel tightly.
- Use the air bleeder to bleed out any trapped air in the grease gun.
- To remove an empty cartridge, pull the follower handle until the follower rod is fully extended and locked. Unscrew the grease gun head and carefully release the follower handle to eject the empty cartridge from the barrel. Repeat the above steps to load the new grease cartridge.

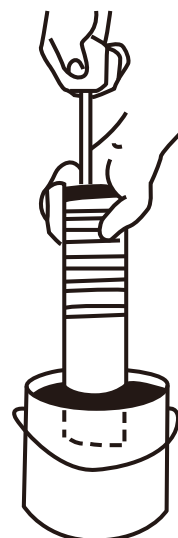
**NOTE:** Ensure that the end of the grease cartridge inserted into the barrel is not damaged and the rim's edges are not deformed. The edges must be circular in shape; otherwise, the rubber of the follower plate cannot enter the grease cartridge. Do not attempt to re-use the empty grease cartridge after using it. Applying some grease on the follower rod rubber will make it easier to enter the grease cartridge.



### b. Bulk Fill Or Suction Fill:

- Unscrew the grease gun head from the barrel.
- Push the follower entirely into the barrel.
- Insert the barrel into the grease drum and slowly pull the follower handle to suck the grease into the barrel.
- Once filled with grease, lock the follower rod and wipe away the excess grease.
- Screw the grease gun head on the barrel tightly.
- Use the air bleeder to bleed out any trapped air in the grease gun.

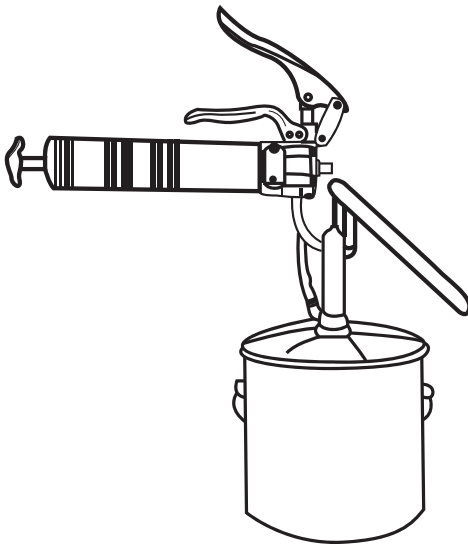
**NOTE:** Always clean the grease fitting before lubricating. For longer service life and efficient operation of the coupler, do not suddenly pull the coupler away from the lubrication fitting. Remove the coupler by lifting it sideways and pulling it away from the fitting.



### c. Dispenser Loading:

- Insert the 9 mm filler valve of the grease gun onto the grease pump loader fitting.
- Fill the grease through the pump until the barrel is full.
- Use the air bleeder to bleed out any trapped air in the grease gun.

**NOTE:** Always remove the used cartridge from the grease gun when bulk filling.



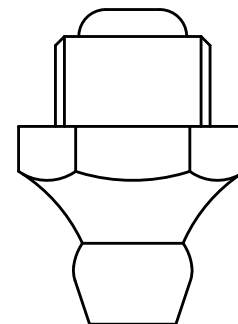
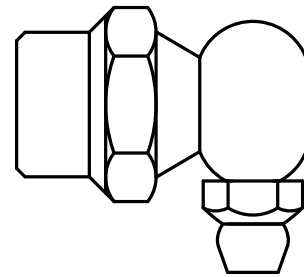
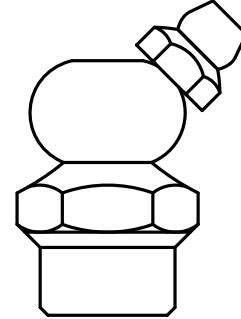
### d. Bleeding Air From The Grease:

- Release the follower rod from the end cap.
- Push the air bleeder button to release air while using the grease gun.

### e. How to use:

- To avoid pumping contamination into the bearing assembly, always clean the grease fitting with a clean rag before greasing.
- Connect the grease coupler with the grease fitting by pushing on it until it clicks in. Then, repeatedly press and release the trigger to start the grease flow and dispense the required amount of grease.

- When dispensing is complete, disconnect the coupler from the grease fitting by pulling the gun away sideways.
- Store the grease gun in a safe place until further use.



**Grease Fitting**

## TROUBLE SHOOTING

Problem	Possible Causes	Solutions
Gun pumps little or no grease	Air lock-follower stuck in cartridge.	Check the condition of cartridge, replace if necessary. Push air bleeder to release air pocket from grease.
	Air lock-grease too thick or cold.	Choose appropriate grease for the temperature conditions.
Grease leaks past the follower	Overfilling gun when using filler pump.	Stop pumping filler pump when groove on piston rod is visible at the back of barrel.

## WARRANTY

This product comes with a 1-year warranty for any manufacturing defects.

**STM AUSTRALIA**  
Henderson Street  
Turrella NSW 2205  
Sydney, Australia

**T:** 1300 131 531  
**E:** [enquiries@stm.net.au](mailto:enquiries@stm.net.au)  
**W:** [www.stm.net.au](http://www.stm.net.au)